

WINWING TM GRIP ADAPTER INSTALL MANUAL V1.0

1. Adapter tools required your TM WARTHOG Grip, Philips screwdriver, 2.5MM Allen (hex) driver, adapter pin, connector wire, plate head screw, J-1 base.



2. Use 2.5mm hex driver to unscrew the 4 screws over the grip top cover, and 5 screw on the left side of the grip. remove the top cover (beware of the screw's location).



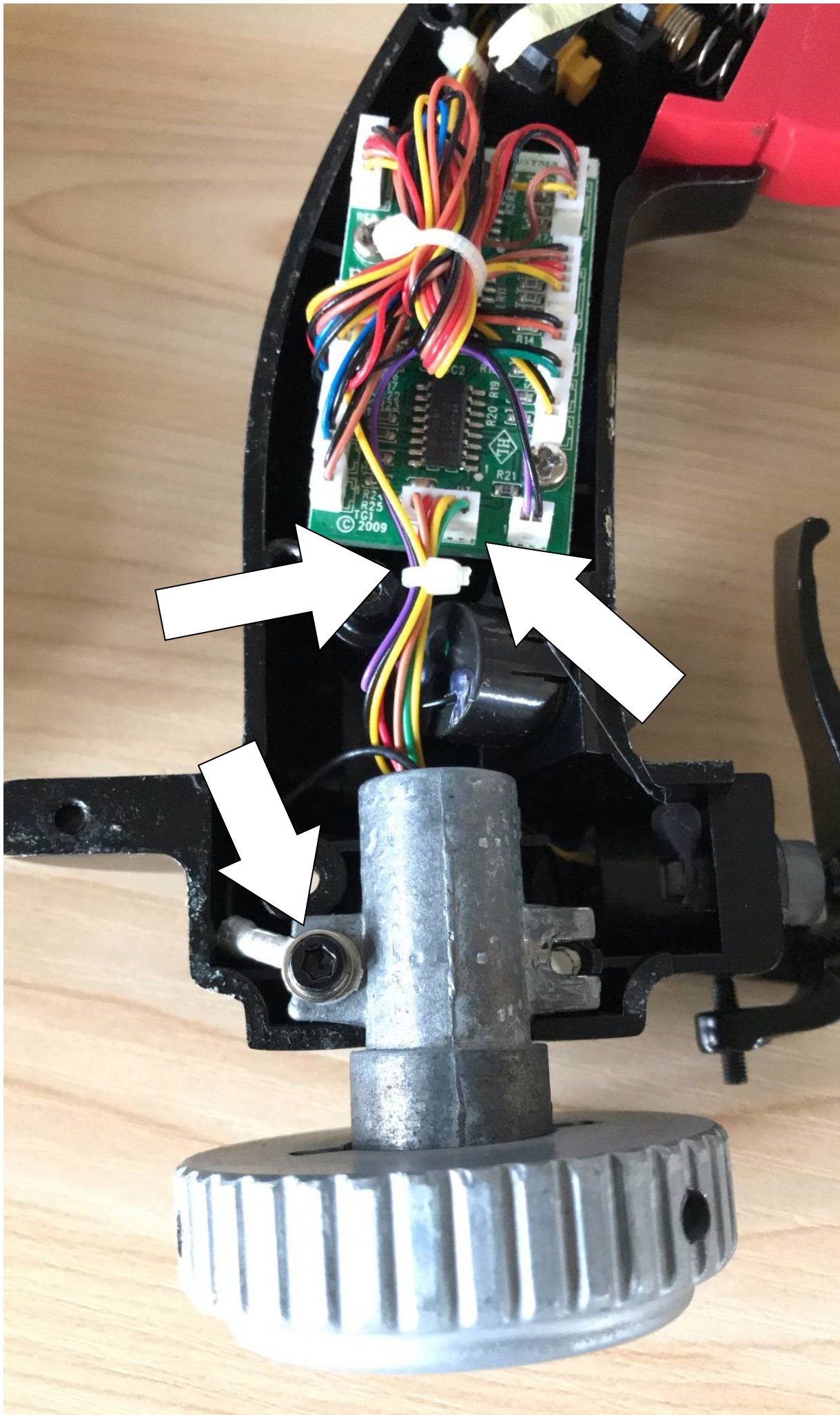
3. Remove the rubber ring on the right side of the paddle switch.



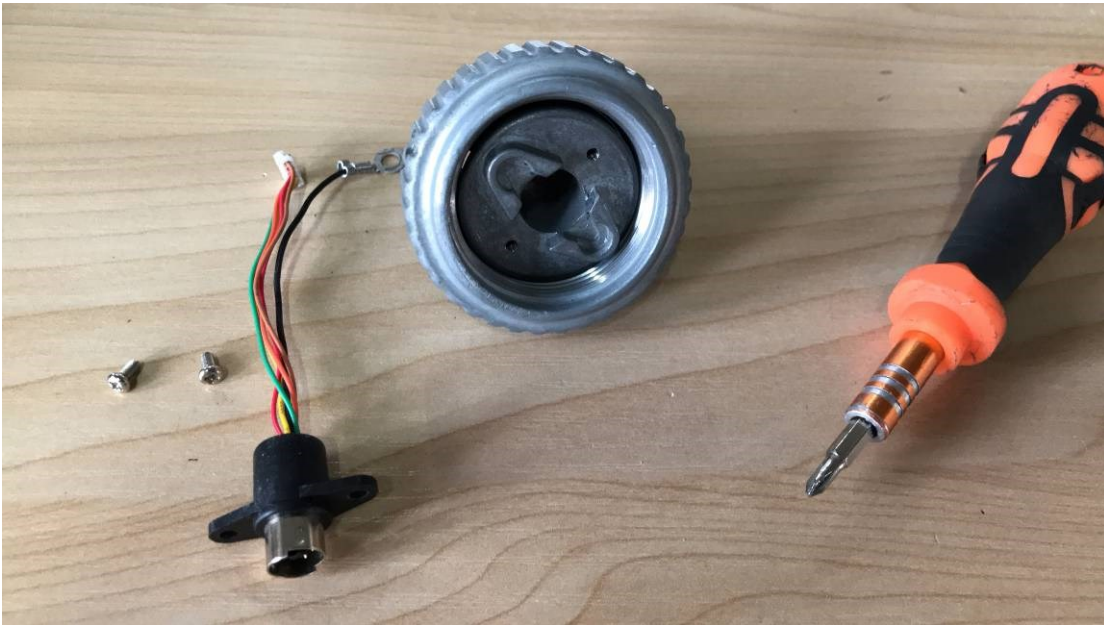
4. Remove the right side grip cover, you should be seeing the main PCB (Circuit Board).



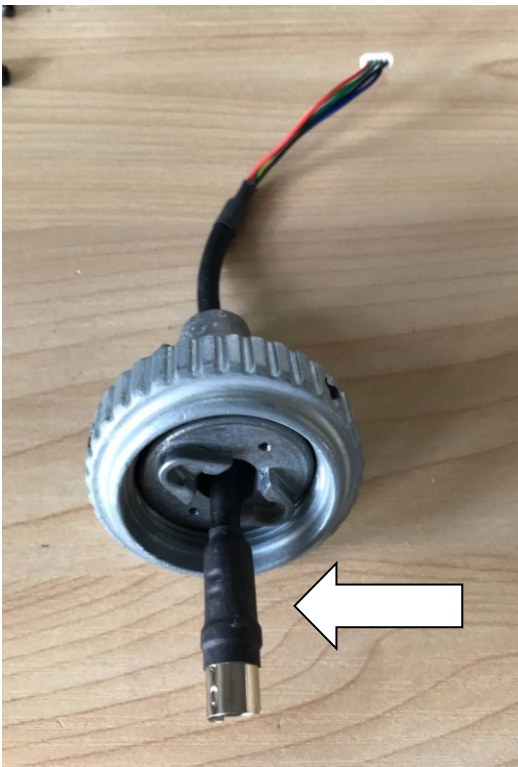
5. Untie the wire, unplug the wire and unscrew the screw as arrow pointed.



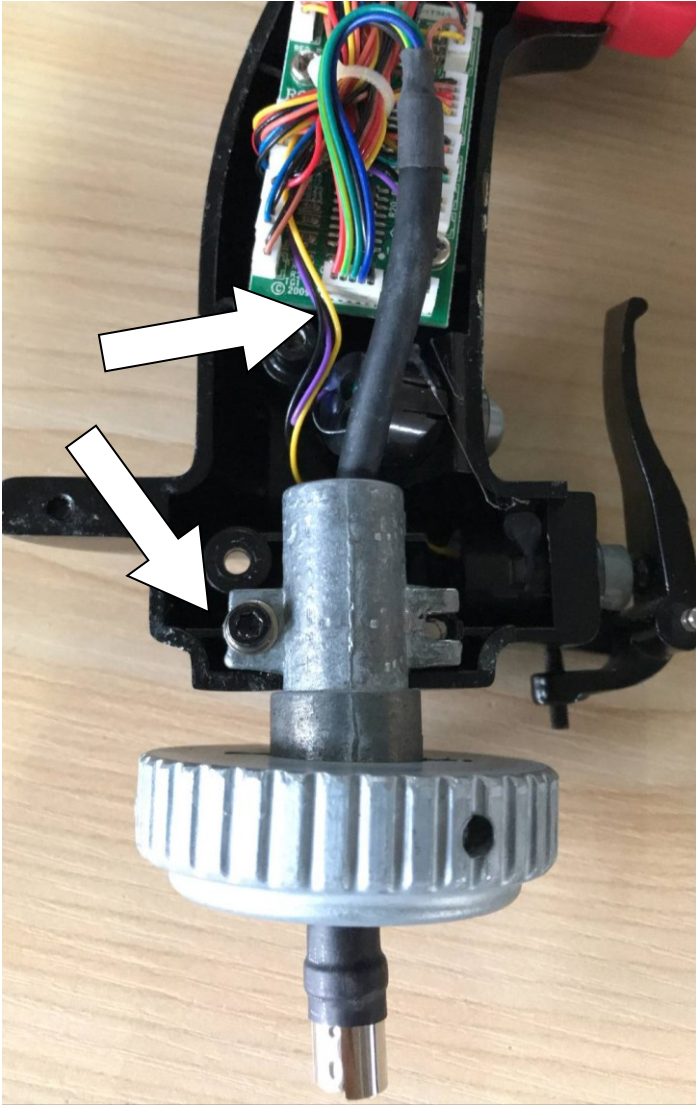
6. Remove the receptor head and remove the connector head and wire.



7. Replace the connector wire, make sure you left 4cm (2 inches) out at the bottom



8. Put back the receptor head, screw the screw back into the grip



9. Close the right side grip cover, check the exterior make sure it close properly and no wire is left out.
(Except for the connector wire)



10. Screw back the 5 screw on the left side of the grip.



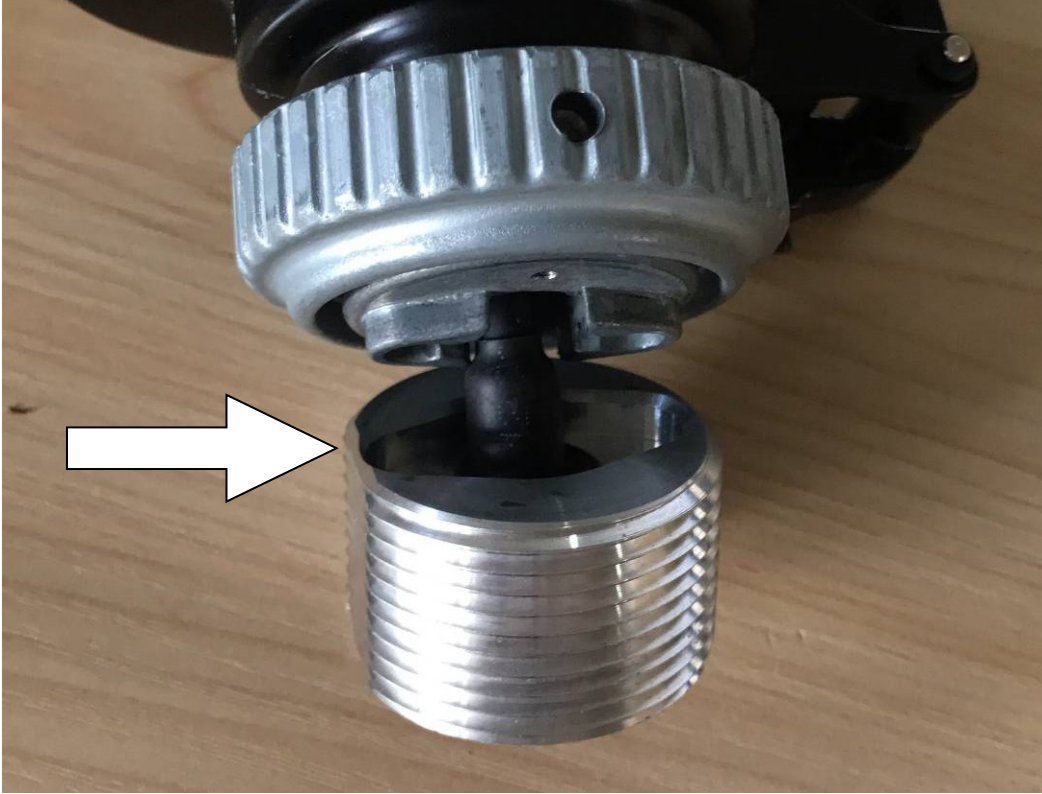
11. Put back the grip top cover.



12 Put back the rubber ring of the paddle switch.



13. Pull the connector wire through the metal tube.



14. Tighten the lower grip screw. Make sure left out 2cm (short of an inch) connector head.



15. Aligned the connector to the base, avoiding pull it out too much from the base.



16. Do not twise your grip, just turn and tighten the screw below! Tighten the whole grip onto base.



17. Make sure the screws are align on the base screw, use 2.5MM Allen screwdriver tighten up the whole set. You are good to go.

